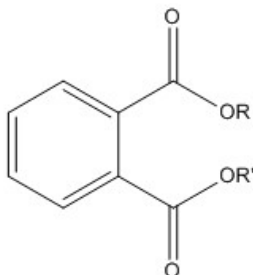


Potential Priority Chemicals:

ortho-Phthalates (1,2-Benzenedicarboxylic acid esters)



November 18, 2015
Meeting of the Scientific Guidance Panel
Biomonitoring California¹

At the July 16, 2015 meeting of the Scientific Guidance Panel (SGP), the Panel recommended including the class “*ortho*-phthalates” as designated chemicals for Biomonitoring California. *ortho*-Phthalates are esters of 1,2-benzenedicarboxylic acid, with the general structure shown above.

The class *ortho*-phthalates is now under consideration by the SGP as potential priority chemicals. The criteria for recommending priority chemicals as specified in the enabling legislation (SB 1379²) are:

- The degree of potential exposure to the public or specific subgroups, including, but not limited to, occupational.
- The likelihood of a chemical being a carcinogen or toxicant based on peer-reviewed health data, the chemical structure, or the toxicology of chemically related compounds.
- The limits of laboratory detection for the chemical, including the ability to detect the chemical at low enough levels that could be expected in the general population.
- Other criteria that the panel may agree to.

The tables on the following pages summarize some information relevant to the criteria for priority chemicals. For more detailed information on *ortho*-phthalates, including a

¹ California Environmental Contaminant Biomonitoring Program (also known as Biomonitoring California), codified at Health and Safety Code section 105440 et seq.

² SB 1379, Perata and Ortiz, Chapter 599, Statutes of 2006, available at:
http://www.oehha.ca.gov/multimedia/biomon/pdf/sb_1379_bill_20060929.pdf

description of the toxicity of this class of chemicals, refer to OEHHA (2015) and the additional references listed at the end of this document.

Table 1 shows those *ortho*-phthalates that currently are on the list of priority chemicals. The Table specifies the metabolites currently measured in urine by the Environmental Health Laboratory (EHL)³, and notes two additional metabolites planned for inclusion in an expanded analytical method. Biomonitoring California results for *ortho*-phthalates available so far can be accessed here: <http://biomonitoring.ca.gov/results/chemical/284>.

Table 2 shows examples of additional *ortho*-phthalates that would be included as priority chemicals if the Panel recommends the entire class be listed. The Table notes selected metabolites that have been detected in human urine and detections of the parent *ortho*-phthalates in dust. For more information on these *ortho*-phthalates, see OEHHA (2015).

Californians are widely exposed to *ortho*-phthalates and ongoing market shifts are expected to change exposure patterns. A recommendation to add this class to the priority list would emphasize the importance of tracking exposures to known and emerging *ortho*-phthalates in California residents over time.

³ The Environmental Health Laboratory is in the California Department of Public Health.

Table 1: *ortho*-Phthalates currently on the list of priority chemicals for Biomonitoring California

<i>ortho</i>-Phthalates currently on priority list	Selected metabolites	Included in Biomonitoring California analytical method
Benzyl butyl phthalate	Mono-benzyl phthalate	✓
	Mono- <i>n</i> -butyl phthalate	✓
Di- <i>n</i> -butyl phthalate	Mono- <i>n</i> -butyl phthalate	✓
Di-isobutyl phthalate	Mono-isobutyl phthalate	✓
Dicyclohexyl phthalate	Mono-cyclohexyl phthalate ^a	✓
Diethyl phthalate	Mono-ethyl phthalate	✓
Di-2-ethylhexyl phthalate	Mono-(2-ethyl-5-carboxypentyl) phthalate	✓
	Mono-2-ethylhexyl phthalate	✓
	Mono-(2-ethyl-5-hydroxyhexyl) phthalate	✓
	Mono-(2-ethyl-5-oxohexyl) phthalate	✓
Di-isodecyl phthalate	Mono-(carboxynonyl) phthalate	Planned for inclusion
Di-isononyl phthalate	Mono-(carboxyoctyl) phthalate	Planned for inclusion
	Mono-(hydroxyisononyl) phthalate	-- ^b
	Mono-isononyl phthalate	--
	Mono-(oxoisononyl) phthalate	--
Dimethyl phthalate	Mono-methyl phthalate	--
Di- <i>n</i> -octyl phthalate	Mono-(3-carboxypropyl) phthalate	✓
	Mono- <i>n</i> -octyl phthalate ^a	--

^a Results for these phthalate metabolites were no longer reported by the Centers for Disease Control and Prevention (CDC) after the 2009-2010 cycle of the National Health and Nutrition Examination Survey (NHANES) because their concentrations were largely undetectable in previous survey periods (CDC, 2015).

^b Not currently included in the method and not currently planned for inclusion.

Table 2: Examples of additional *ortho*-phthalates that will be included as priority chemicals if the entire chemical class is listed

Additional <i>ortho</i> -phthalates ^a (examples)	Selected metabolites identified in human urine	Detections of parent <i>ortho</i> -phthalate in dust
Diallyl phthalate	-- ^{b,c}	--
Di- <i>n</i> -hexyl phthalate	--	✓
Di- <i>n</i> -pentyl phthalate	Mono-(4-hydroxypentyl) phthalate	✓
	Mono- <i>n</i> -pentyl phthalate	
Dipropyl phthalate	--	✓
Di- <i>n</i> -heptyl phthalate	--	✓
Di-isoheptyl phthalate	--	✓
Di-2-propylheptyl phthalate	Mono-2-(propyl-6-hydroxyheptyl) phthalate	--
	Mono-2-(propyl-6-oxoheptyl) phthalate	
Didodecyl phthalate	--	✓
Diundecyl phthalate	--	✓

^a These are example *ortho*-phthalates. If the SGP recommends inclusion of the class as priority chemicals, the Program would determine which *ortho*-phthalates to focus on and the appropriate target metabolites for measurement.

^b No studies located.

^c Diallyl phthalate (parent compound) has been detected in breast milk.

References

Potential designated chemical document on ortho-phthalates:

Office of Environmental Health Hazard Assessment (OEHHA, 2015). Potential Designated Chemicals: *ortho*-Phthalates (1,2-Benzenedicarboxylic acid esters). Materials for Biomonitoring California Scientific Guidance Panel Meeting. July 16, 2015. Available at:
www.biomonitoring.ca.gov/sites/default/files/downloads/PotenDesig_orthoPhthalates_071615_0.pdf

Selected additional references not cited in OEHHA (2015)

Abdel-Maksoud FM, Leasor KR, Butzen K, Braden TD, Akingbemi BT (2015). Prenatal exposures of male rats to the environmental chemicals bisphenol A and di (2-ethylhexyl) phthalate impact the sexual differentiation process. *Endocrinology* DOI: <http://dx.doi.org/10.1210/en.2015-1077> [Epub ahead of print].

Abidi JJ, Lee MK, Naimi AI, Barrett E, Nguyen RH et al. (2015). Human chorionic gonadotropin partially mediates phthalate association with male and female anogenital distance. *J Clin Endocrinol Metab* 100:E1216-24. DOI: 10.1210/jc.2015-2370.

Ait Bamai, Shibata E, Saito I, Araki A, Kanazawa A (2014). Exposure to house dust phthalates in relation to asthma and allergies in both adults and children. *Sci Total Environ* 485-486:153-63.

Axelsson J, Rylander L, Rignell-Hydbom A, Lindh CH, Jönsson BA et al. (2015a). Prenatal phthalate exposure and reproductive function in young men. *Environ Res* 138:264-70.

Axelsson J, Rylander L, Rignell-Hydbom A, Jönsson BA, Lindh CH et al. (2015b). Phthalate exposure and reproductive parameters in young men from the general Swedish population. *Environ Int* 85:54-60.

Bi X, Yuan S, Pan X, Winstead C, Wang Q (2015). Comparison, association, and risk assessment of phthalates in floor dust at different indoor environments in Delaware, USA. *J Env Sci Health A Tox Hazard Subst Environ Eng* 50:1428-39.

Bloom MS, Whitcomb BW, Chen Z, Ye A, Kannan K et al. (2015). Associations between urinary phthalate concentrations and semen quality parameters in a general population. *Hum Reprod* 30:2645-57.

Branch F, Woodruff TJ, Mitro SD, Zota AR (2015). Vaginal douching and racial/ethnic disparities in phthalates exposures among reproductive-aged women: National Health and Nutrition Examination Survey 2001-2004. *Env Health* 14:57.

Buckley JP, Engel SM, Mendez MA, Richardson DB, Daniels JL et al. (2015). Prenatal phthalate exposures and childhood fat mass in a New York City cohort. *Environ Health Perspect* DOI:10.1289/ehp.1509788 [Epub ahead of print].

Calafat AM, Silva MJ, Reidy JA, Gray LE, Samander E et al. (2006). Mono-(3-carboxypropyl) phthalate, a metabolite of di-*n*-octyl phthalate. *J Toxicol Env Heal A* 69:215-27.

Cao XL, Zhao W, Churchill R, Hilts C (2014). Occurrence of di-(2-ethylhexyl) adipate and phthalate plasticizers in samples of meat, fish, and cheese and their packaging films. *J Food Prot* 77:610-20.

Centers for Disease Control and Prevention (CDC, 2015). Fourth National Report on Human Exposure to Environmental Chemicals. Updated Tables. February 2015. US Department of Health and Human Services. Available at:
http://www.cdc.gov/biomonitoring/pdf/FourthReport_UpdatedTables_Feb2015.pdf

Chang WH, Li SS, Wu MH, Pan HA, Lee CC (2015). Phthalates might interfere with testicular function by reducing testosterone and insulin-like factor 3 levels. *Hum Reprod* 30:2658-70.

Cheng Z, Nie XP, Wang HS, Wong MH (2013). Risk assessments of human exposure to bioaccessible phthalate esters through market fish consumption. *Environ Int* 57-58:75-80.

DeBartolo D, Jayatilaka S, Yan Siu N, Rose M, Ramos RL et al. (2015). Perinatal exposure to benzyl butyl phthalate induces alterations in neuronal development/maturation protein expression, estrogen responses, and fear conditioning in rodents. *Behav Pharmacol* DOI: 10.1097/FBP.000000000000190 [Epub ahead of print].

Den Hond E, Tournaye H, De Sutter P, Ombelet W, Baeyens W et al. (2015). Human exposure to endocrine disrupting chemicals and fertility: A case-control study in male subfertility patients. *Environ Int* 84:154-60.

Ferguson KK, McElrath TF, Mukherjee B, Loch-Caruso R, Meeker JD (2015). Associations between maternal biomarkers of phthalate exposure and inflammation using repeated measurements across pregnancy. *PLoS ONE* 10:e0135601.

Gong M, Weschler CJ, Liu L, Shen H, Huang L et al. (2015). Phthalate metabolites in urine samples from Beijing children and correlations with phthalate levels in their handwipes. *Indoor Air* DOI:10.1111/ina.12179 [Epub ahead of print].

Gray LE Jr., Furr J, Tatum-Gibbs KR, Lambright C, Sampson H et al. (2015). Establishing the "biological relevance" of dipentyl phthalate reductions in fetal rat testosterone production and plasma and testis testosterone levels. *Toxicol Sci* DOI: 10.1093/toxsci/kfv224 [Epub ahead of print].

Hirai S, Naito M, Kuramasu M, Ogawa Y, Terayama H et al. (2015). Low-dose exposure to di-(2-ethylhexyl) phthalate (DEHP) increases susceptibility to testicular autoimmunity in mice. *Reprod Biol* 15:163-71.

Hou JW, Lin CL, Tsai YA, Chang CH, Liao KW et al. (2015). The effects of phthalate and nonylphenol exposure on body size and sexual characteristics during puberty. *Int J Hyg Environ Health* 218:603-15.

Huang PC, Tsai CH, Liang WY, Li SS, Pan WH et al. (2015). Age and gender differences in urinary levels of eleven phthalate metabolites in general Taiwanese population after a DEHP episode. *Plos One* 10:e0133782.

Jackson J, Sutton R (2008). Sources of endocrine-disrupting chemicals in urban wastewater, Oakland, CA. *Sci Total Environ* 405:153-60.

Kardas F, Bayram AK, Demirci E, Akin L, Ozmen S et al. (2015). Increased serum phthalates (MEHP, DEHP) and bisphenol A concentrations in children with autism spectrum disorder: The role of endocrine disruptors in autism etiopathogenesis. *J Child Neurol* DOI: 10.1177/0883073815609150 [Epub ahead of print].

Kim MG, Kim TH, Shin BS, Lee YB, Lee JB et al. (2015). Sensitive liquid chromatography-tandem mass spectrometry method for the simultaneous determination of benzyl butyl phthalate and its metabolites, monobenzyl phthalate and monobutyl phthalate, in rat plasma, urine, and various tissues collected from a toxicokinetic study. *Anal Bioanal Chem* 407:7391-400.

Kim SH, Cho SH, Ihm HJ, Oh YS, Heo SH et al. (2015). Possible role of phthalate in the pathogenesis of endometriosis: *In vitro*, animal, and human data. *J Clin Endocrinol Metab* DOI: 10.1210/jc.2015-2478 [Epub ahead of print].

La Rocca C, Tait S, Guerranti C, Busani L, Ciardo F et al. (2015). Exposure to endocrine disruptors and nuclear receptors gene expression in infertile and fertile men from Italian areas with different environmental features. *Int J Environ Res Public Health* 12:12426-45.

Li N, Chen X, Zhou X, Zhang W, Yuan J et al. (2015). The mechanism underlying dibutyl phthalate induced shortened anogenital distance and hypospadias in rats. *J Pediatr Surg* DOI: 10.1016/j.jpedsurg.2015.08.046 [Epub ahead of print].

Liu Y, Peterson KE (2015). Maternal exposure to synthetic chemicals and obesity in the offspring: Recent findings. *Curr Environ Health Rep* 2:339-47.

Lu Y, Lyu XM, Xiao SH, Yang XM, Wang YZ et al. (2015). Mutagenic and estrogenic effects of organic compounds in water treated by different processes: A pilot study. *Biomed Environ Sci* 28:571-81.

Luongo G, Östman C (2015). Organophosphate and phthalate esters in settled dust from apartment buildings in Stockholm. *Indoor Air* DOI: 10.1111/ina.12217 [Epub ahead of print].

Maguire-Boyle SJ, Barron AR (2014). Organic compounds in produced waters from shale gas wells. *Environ Sci Processes Impacts* 16:2237-48.

Maresca MM, Hoepner LA, Hassoun A, Oberfield SE, Mooney SJ et al. (2015). Prenatal exposure to phthalates and childhood body size in an urban cohort. *Environ Health Perspect* DOI:10.1289/ehp.1408750 [Epub ahead of print].

Marie C, Vendittelli F, Sauvant-Rochat MP (2015). Obstetrical outcomes and biomarkers to assess exposure to phthalates: A review. *Environ Int* 83:116-36.

Medic-Stojanoska M, Milankov A, Vukovic B, Vukcevic D, Sudji J et al. (2015). Do diethyl phthalate (DEP) and di-2-ethylhexyl phthalate (DEHP) influence the metabolic syndrome parameters? Pilot study. *Environ Monit Assess* 187:526.

Mu D, Gao F, Fan Z, Shen H, Peng H et al. (2015). Levels of phthalate metabolites in urine of pregnant women and risk of clinical pregnancy loss. *Environ Sci Technol* 49:10651-7 [Correction published in: *Environ Sci Technol* (2015) 49:13081].

Myridakis A, Fthenou E, Balaska E, Vakinti M, Kogevinas M et al. (2015). Phthalate esters, parabens, and bisphenol-A exposure among mothers and their children in Greece (Rhea cohort). *Environ Int* 83:1-10. DOI: 10.1016/j.envint.2015.05.014.

Pan Y, Jing J, Dong F, Yao Q, Zhang W et al. (2015). Association between phthalate metabolites and biomarkers of reproductive function in 1066 Chinese men of reproductive age. *J Hazard Mater* 300:729-36.

Pollack AZ, Buck Louis GM, Chen Z, Sun L, Trabert B et al. (2015). Bisphenol A, benzophenone-type ultraviolet filters, and phthalates in relation to uterine leiomyoma. *Environ Res* 137:101-7.

Sabaredzovic A, Sakhi AK, Brantsæter AL, Thomson C (2015). Determination of 12 urinary phthalate metabolites in Norwegian pregnant women by core-shell high performance liquid chromatography with on-line solid phase extraction, column switching and tandem mass spectrometry. *J Chromatogr B Analyt Technol Biomed Life Sci* 1002:343-52.

Shapiro GD, Dodds L, Arbuckle TE, Ashley-Martin J, Fraser W et al. (2015). Exposure to phthalates, bisphenol A and metals in pregnancy and the association with impaired glucose tolerance and gestational diabetes mellitus: The MIREC study. *Environ Int* 83:63-71.

Shi H, Cao Y, Shen Q, Zhao Y, Zhang Z et al. (2015). Association between urinary phthalates and pubertal timing in Chinese adolescents. *J Epidemiol* 25:574-82.

Silva MJ, Reidy JA, Kato K, Preau JL Jr., Needham L et al. (2007). Assessment of human exposure to di-isodecyl phthalate using oxidative metabolites as biomarkers. *Biomarkers* 12:133-44.

Silva MJ, Samander E, Preau JL Jr., Needham LL, Calafat AM (2006a). Urinary oxidative metabolites of di(2-ethylhexyl) phthalate in humans. *Toxicology* 219:22-32.

Silva MJ, Reidy JA, Preau JL Jr., Needham LL, Calafat AM (2006b). Oxidative metabolites of diisononyl phthalate as biomarkers for human exposure assessment. *Environ Health Perspect* 114:1158–61.

Spade DJ, Hall SJ, Wilson S, Boekelheide K (2015). Di-*n*-butyl phthalate induces multinucleated germ cells in the rat fetal testis through a nonproliferative mechanism. *Biol Reprod* DOI: 10.1095/biolreprod.115.131615 [Epub ahead of print].

Starling AP, Engel LS, Calafat AM, Koutros S, Satagopan JM et al. (2015). Predictors and long-term reproducibility of urinary phthalate metabolites in middle-aged men and women living in urban Shanghai. *Environ Int* 84:94-106.

Tran TM, Kannan K (2015). Occurrence of phthalate diesters in particulate and vapor phases in indoor air and implications for human exposure in Albany, New York, USA. *Arch Environ Contam Toxicol* 68:489-99.

Trasande L, Attina TM (2015). Association of exposure to di-2-ethylhexylphthalate replacements with increased blood pressure in children and adolescents. *Hypertension* 66:301-8.

Valvi D, Monfort N, Ventura R, Casas M, Casas L et al. (2015). Variability and predictors of urinary phthalate metabolites in Spanish pregnant women. *Int J Hyg Environ Health* 218:220-31.

Wang X, Lou X, Zhang N, Ding G, Chen Z et al. (2015). Phthalate esters in main source water and drinking water of Zhejiang Province (China): Distribution and health risks. *Environ Toxicol Chem* 34:2205-12.

Werner EF, Braun JM, Yolton K, Khoury JC, Lanphear BP (2015). The association between maternal urinary phthalate concentrations and blood pressure in pregnancy: The HOME Study. *Environ Health* 14:75.

Weschler CJ, Bekö G, Koch HM, Salthammer T, Schropp T et al. (2015). Transdermal uptake of diethyl phthalate and di(*n*-butyl) phthalate directly from air: Experimental verification. *Environ Health Perspect* 123:928-34.

Zhao X, Liu S, Wang P, Tang Z, Nui H et al. (2015). Surfactant-modified flowerlike layered double hydroxide-coated magnetic nanoparticles for preconcentration of phthalate esters from environmental water samples. *J Chromatogr A* 1414:22-30.

Zhou L, Lei Y, Zhang D, Ahmed S, Chen S (2015). An ultra-sensitive monoclonal antibody-based enzyme linked immunosorbent assay for dibutyl phthalate in human urinary [sic]. *Sci Total Environ* 541:570-8.

Zhou W, Chen MH, Shi W (2015). Influence of phthalates on glucose homeostasis and atherosclerosis in hyperlipidemic mice. *BMC Endocr Disord* 15:13.